

**Proud to contribute towards:**



**University of Sheffield (Alumni) Scanner Campaign**

[www.sheffield.ac.uk/alumni/sheffieldscanner](http://www.sheffield.ac.uk/alumni/sheffieldscanner)

“Thank you so much for your very kind donation towards our Sheffield Scanner campaign. Your gift has moved us one step closer to our ambition of bringing MRI-PET technology right here in Sheffield.

“The new scanner will open up exciting possibilities for improving diagnosis and treatment for a whole range of patients – from Motor Neurone Disease patients to cancer sufferers and stroke victims...”

*Jemma Gurr  
Regular Giving Manager  
The University of Sheffield*



[www.gosh.nhs.uk](http://www.gosh.nhs.uk)



Photos courtesy pixabay.com

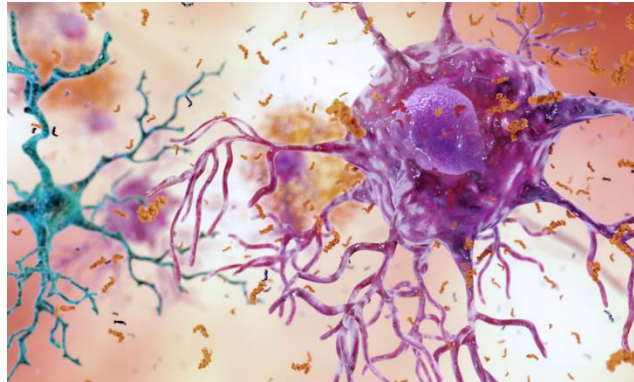
“On behalf of the staff, parents and children at Great Ormond Street Hospital, thank you.”

*Sandra Benson  
Supporter and Income Services Manager  
Great Ormond Street Hospital Children’s Charity*



“Once again, thank you. With your help we hope to one day win the battle against dementia.”

*Beth Astill  
Customer Care*



Photos courtesy of Pixabay and the NIA



The  
University  
Of  
Sheffield.



“This is a really kind gesture and we are very grateful to you for donating this as a raffle prize...we are pleased to confirm that the evening raised £17,089.50 for Guide Dogs and we would like to thank you for your generosity and support in helping to achieve this amazing amount for the charity.”

*Polly Wilson  
Senior Events Manager  
Development, Alumni Relations and Events*

*An Audience with Dave Thomas and  
Special Guest Harry Redknapp*



*Dave Thomas, former England international footballer and Harry Redknapp, football manager and television celebrity, delighting the audience with tales from their footballing days. Dave also talked about how he has become the first top level footballer to be registered blind since his playing days and awarded a guide dog. Paul Fletcher MBE, ex-professional footballer and businessman was asking the questions on the night.*

# Elite Athlete Performance Centre

at

**Loughborough**  
COLLEGE est. 1909

[www.uksponsorship.com/eliteathletecentreppt.ppt](http://www.uksponsorship.com/eliteathletecentreppt.ppt)



Photos courtesy pixabay.com

“May I thank you for your kind donation...which is very much appreciated. This will be put to good use towards the project. We will keep you informed of continuous developments.”

*Barrie Pierpoint*  
*Appeals, Fundraising and Sponsorships*

“Without such assistance this new facility would not be possible. This centre is the first of its kind within the UK...and support(s) the Stars of the Future over the coming decades.”

*J E Mutton*  
*Principal and Chief Executive*  
*Loughborough College*